

RAW MATERIALS

Catalogue 2025

- White Limestone Lumps
- Grey Limestone
- Limestone Powder
- Quick Lime
- Dolomite Stone
- Slag GBFS
- Fly Ash
- Bottom Ash



White Limestone Lumps – Calcium Carbonate Chips/Lumps is of the purest quality with a CaCO_3 content over 98%, making it some of the purest, whitest, and least abrasive white limestone available globally.

- Min order quantity: 10,000 tons
- Supply ability: 40,000 tons per month
- Size: 10-40mm / 30-120mm
- Packing: Bulk
- Application: Paints, Plastics, Paper, Color/Black Master batches, Adhesives, Rubber, PVC Cables, PP compounds, PVS/Plastics

MATERIAL PROPERTIES:	
CaCo3	98.3% Min
Fe2O3	0.01% Max
MgO	0.02% Max
SiO2	0.03% Max
Al2O3	0.02% Max
Density	2.65 -2.7 g/cm
Hardness	3 Moh
Moisture	0.20%
Oil absorption	23/100g CaCO_3
Whiteness	95% Min
Brightness	92% Min

Mada supplies **Grey Limestone** high quality at reasonable prices. during recent years, we have exported a huge quantity.

Limestone has numerous uses: as a Cement, Steel, Glass, building material, as aggregate for the base of roads, as white pigment or filler in products such as toothpaste or paints, as a chemical feedstock for the production of lime, or as a popular decorative addition to rock gardens.

NO.	SPECIFICATIONS		
		REQUIREMENT	STANDARD GRADE
1	CaO	53% Min	54%
2	SiO2	0.55 % Max	1%
3	MgO	0.1 % Max	1%
4	Al2O3	0.17 % Max	0.06% Max
5	Limestone Size	5-25mm – 20-40mm – 40-80mm	

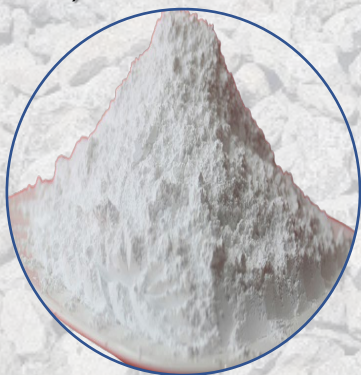


The limestone for feed is exploiting from our mining with high quality and whiteness. The product is acceptable and suitable to all the feed mills in Vietnam and international countries which will be used:

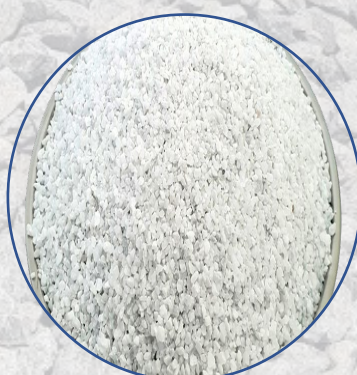
- Poultry Feed Manufacture
- Fish/Lobster Feed Manufacture
- Animal Feed
- Water treatment

CHEMICAL ANALYSIS:		PHYSICAL ANALYSIS:	
Calcium Carbonate (CaCO ₃)	≥95%	Size	80 mesh – 120 mesh – 250 mesh
Calcium Oxide (CaO)	≥53.02%	Brightness	≥ 90%
Calcium (Ca)	≥38.03%	Whiteness	≥ 93%
Iron Oxide (Fe ₂ O ₃)	< 0.02	Moisture	≤ 0.2%
Aluminium Oxide (Al ₂ O ₃)	< 0.03	Proportion	1g/cm ³
Magnesium Oxide (MgO)	< 0.2	Oil absorption	≥ 23g/100g
Silicon Oxide (SiO ₂)	< 0.2	Content loss on ignition	≤ 43.08%
Sodium Oxide (Na ₂ O)	< 0.06		
Potassium Oxide (K ₂ O)	< 0.03		
APPLICATION / USAGE: Manufacturing Poultry Feed; Shrimp Feed; Fish Feed			

LIMESTONE POWDER FOR FEED GRADE (80 MESH – 250 MESH)



Limestone Granular 2-3mm whiteness 95%



Our quick lime is used to treat environment, sugar, water and refine steel, paper...

Quick lime Specification:

Calcium oxide	CaO	90.00%	Min
Magnesium oxide	MgO	1.50%	Max
Ferric oxide	Fe ₂ O ₃	0.04%	Max
Silica	SiO ₂	0.05%	Max
Alumina	Al ₂ O ₃	0.04%	Max
Sulphur	S	0.03%	Min
Loss on ignition	LOI	5.00%	Max
Carbon dioxide	CO ₂	2.40%	Max

- Size : 10 -70 mm (90%)
- Packing: 1,250 kg Jumbo bag/ New bag with nylon coated/ laminated bag , without inner liner.



Dolomite Vietnam: size 10-40mm – 30-60mm – 40-80mm
Dolomite supplied by mada trade is of high purity with very low iron content ($\text{Fe}_2\text{O}_3 < 0.03\%$) and high calcium oxide ($\text{CaO} > 30.60\%$) content. Particle size as per customer's requirement.

Product Specification / Models

Product Name : Dolomite

Chemical and Physical Properties

SiO_2 : 2% max;
 Al_2O_3 : 1% max;
 CaO : 30% min;
 MgO : 19.50% min;
 Fe_2O_3 : 1% max;
LOI: 41-46%
Color: Gray

Size : 0-3mm; 10-40mm; or customize 40-80mm

Packing : Bulk

Application :

Steel Plant, Glass Plant ,Construction Material, Refractory Material, Chemical Industry, Agriculture, Environmental Protection, Energy Saving.

Description :

As a flux for smelting iron and steel, the dolomite can neutralize the acidic slag, improve the alkalinity of the slag and reduce the activity of FeO in the slag, so as to reduce the erosion of the furnace lining.

The chemical composition of pulverized Dolomite supplied by us as follows:

CaO	Fe2O3	MgO	SiO2
> 30.45%	< 0.05%	> 19.50%	< 0.05%



Granulated blast-furnace slag (GBFS) is obtained by quenching molten iron slag (a by-product of iron and steel-making) from a blast furnace in water or steam, to produce a glassy, granular product that is then dried and ground into a fine powder. It is suitable for applications in marine environment, mass concreting and sulphate environment, water retaining structures, basement and other structures which require low heat of hydration.

Parameters	Test methods	Unit	Results
Cao	EN 196-2:2013	%	44.18
MgO		%	3.59
Al ₂ O ₃		%	2.42
Fe ₂ O ₃		%	2.60
Total sulfur (as S)	HAPG-TST-SOP-8002	%	0.42
SiO ₂	EN 196-2:2013	%	38.74
TiO ₂	Refer ASTM E878-12	%	0.17
Moisture	EN 15167-1:2006	%	9.86
MnO	HAPG-TST-SOP-8015	%	0.15
Total alkalies (%Na ₂ O + 0.658%K ₂ O)	EN 196-2:2013	%	0.60
Glass content (*)	TCCS 02:2012 VLXD/TTK0	%	~ 98



Fly Ash For Concrete Premium Grade Coal Fly Ash- Fly ash is a fine powder that is a by product of burning pulverized coal in electric generation power plants.

Packing detail: in Bulk or Jumbo bags 1,5MT

Grade: Concrete

Size: 10 MICRONS – 45 MICRONS

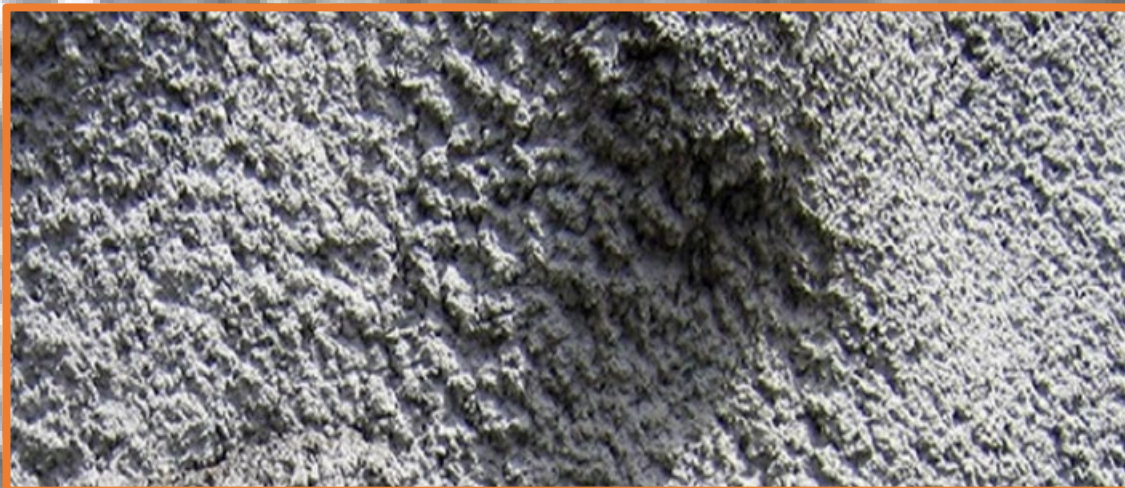
Standard: ASTM C 618

Certification: ISO9001 & SGS

Delivery detail:

Delivery FOB: 20 days after the order confirmed.

Quality: SiO₂: 55-60% – LOI: 3-4% – Al₂O₃: 20-23% –
Fe₂O₃: 4-6% – SO₃: 0,06% – Moisture: 0,05%



Bottom Ash (Bottom Slag) is a fine powder size: 0.5-5mm that is a by product of burning pulverized coal in electric generation power plants.

Use for: Cement industry – Road construction – Backfill – Concrete

No	Chemical Properties	Result	Unit	Standard Chemical Analysis	Testing Method
01	Silica (SiO_2)	59.70	%	55-60	EN 196-2:2013
02	Calcium Oxide (CaO)	2.30	%	1 – 3	
03	Magie Oxide (MgO)	1.62	%	3 Max	
04	Aluminates (AL_2O_3)	22.34	%	20-22	
05	Iron Oxide (Fe_2O_3)	4.20	%	3-5	
06	LOI	3.72	%	5 Max	
07	SO_3	0.85	%	1 Max	
08	Moisture	4.92	%	6 Max	
09	Size	85	%	0.5-5mm	
10	Colour			Gray/ Yellow	

➤ Packing detail: in Bulk

➤ Delivery detail:

1. Delivery time : 10 days after the order confirmed.

2.Quantity: 100,000Mt per months

Bottom Ash, being primarily pozzolanic, can actually replace a percentage of the Portland cement, to produce an even stronger, more durable and more environment friendly concrete.



Gypsum Powder

Gypsum is the ideal choice for remodeling and repair works, and for the creation of beautiful cornices and decorations.

Our Gypsum produces a refined and chip resistant finishes.

Gypsum is suitable for healthy and comfort interior door ambience. It is a high-grade product that complies with the internationally set standards.

You can also use Gypsum for-wall plastering and as an adhesive for gypsum boards and other gypsum-based items on concrete and cement walls.

<i>Colour</i>	<i>White</i>
<i>Free water content</i>	<i>0.20%</i>
<i>Combined water content</i>	<i>4.80%</i>
<i>Water demand</i>	<i>72%</i>
<i>Initial setting time</i>	<i>6-9</i>
<i>Final setting time</i>	<i>15-25</i>
<i>Spread of the mould for test</i> <i>230 mm</i>	<i>225 to</i>
<i>Screen 200 micron/70-mesh</i>	<i>100%</i>
<i>Screen 150 micron/100-mesh</i>	<i>99%</i>
<i>Screen 75 micron/200-mesh</i>	<i>95%</i>
<i>Compression</i> <i>strength</i>	<i>12/N/mm²</i>
<i>Flexure strength</i>	<i>5 Mpa</i>
<i>PH</i>	<i>7.8</i>

Agriculture Gypsum

It is important to improve the characteristics of soil, by treating the dangerous salts, easy for use and affordable price.

- Improves soil reclamation.
- Removes salt crust from soil.
- Improve soil quality.
- Balances soil pH.
- Increases crop production.
- Non-toxic, Easy to handle natural material.
- Environment friendly.

Calcium Oxide	Cao	31.94%
Magnesium Oxide	MgO	1.00%
Silica	SiO2	0.28%
Aluminium Oxide	Al2O3	0.02%
Iron Oxide	Fe2O3	0.04%
Sulphate	SO3	44.58%
Purity	CaSo4-2H2O	95.85%
Crystal water		20.70%
Chloride	Cl as (Na Cl)	0.008%
Moisture (Free Moisture)		0.54%
Fineness		70-200 Mesh

Limestone Powder

Limestone powder has many natural uses as well as commercial ones. Commercial limestone powder is used in antacids as filler in various industry, it is used as well in the production of decoration materials and construction.

It is also a great calcium fortifier for animal and poultry feed.

Limestone is used in the production of:

- ☐ Animal and poultry feeds
- ☐ Pharmaceutical products
- ☐ Food and drinks
- ☐ Agriculture and fertilizers
- ☐ Building materials (i.e. lime and marble)

Density	2650 kg / m ³
Hardness	3 Mohs
Refractive index	1.59
Particle shape	Crystalline "Rhomboidal"
Colour	White



sales@bodovaltd.com
<https://www.bodovaltd.com/>

